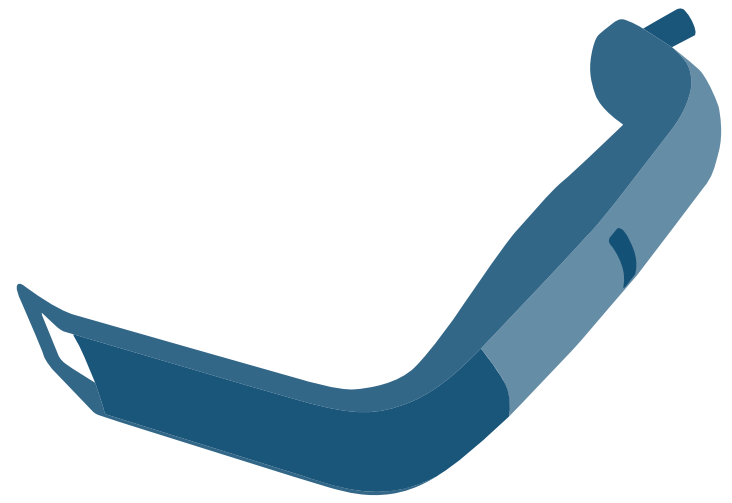




# ONETRAC™

Single-Use Cordless Retractor with Integrated LED Light Source



# ONETRAC LX™

Single-Use Cordless Retractor with Integrated Multi-LED Light Source



## VISION

**ONETRAC** is the worlds first single-use cordless surgical retractor with integrated LED light source and smoke evacuation channel. Illumination in the depths of a surgical tissue pocket or cavity can now be met within seconds; NO assembly, additional parts/components, or fiber-optic cables required.

### ONETRAC LX EXCLUSIVE FEATURES



**Multiple lighting configurations** allows surgeons to achieve ideal illumination coverage within pocket



**Latest generation surface mounted LEDs** are 5x brighter with wider coverage and precise color temperature



**Light intensity adjustment** dial allows user to set illumination strength to optimal levels



## POWER

Each **ONETRAC** unit comes complete with a fully integrated LED light source. The **ONETRAC** light source, powered by alkaline button batteries, does not require a fiber-optic cord or any other additional parts, components, or assembly. **ONETRAC**'s LED light source produces NO damaging heat.

### ONETRAC LX EXCLUSIVE FEATURES



**3 hours of continuous use** with all LED's activated and set to maximum illumination strength



Primary, non-rechargeable Lithium / manganese dioxide batteries



**Battery activation tab** reduces risk during shipping and facilitates hands-free battery removal



## CONTROL

Each **ONETRAC** unit weighs less than 3 ounces. And because **ONETRAC** does not require the use of a fiber-optic cord, there is no added weight or limitation of movement or maneuverability.

### ONETRAC LX EXCLUSIVE FEATURES



**Color-coded size indicator** allows user to easily identify and differentiate between blade sizes



**Illumination control panel** allows users to easily access and cyle through lighting configurations and illumination intensity



**Ergonomically designed handle** improves maneuverability during procedures